



Daily machine check

Guangzhou HuaQin Playground Equipment Co.,Ltd

Contact: Bryan

Tel:+86-020 87399677

Wechat/QQ:543152778

Email:ftm@cnhuaqin.com

Whatsapp/Mobile:+86-13928861491

Add:No.floor 3-4,8th Plant,No.22 First street,Daban industrial park,Tinggen village,shatou street,Panyu district,Guangzhou City

Motor wheel



1. Clean textile and hair after 1 week business operation.
Must be kept clean and tidy, used away from textile fabric and human hair



2. Must keep the motor wheel dry.
Away from water.

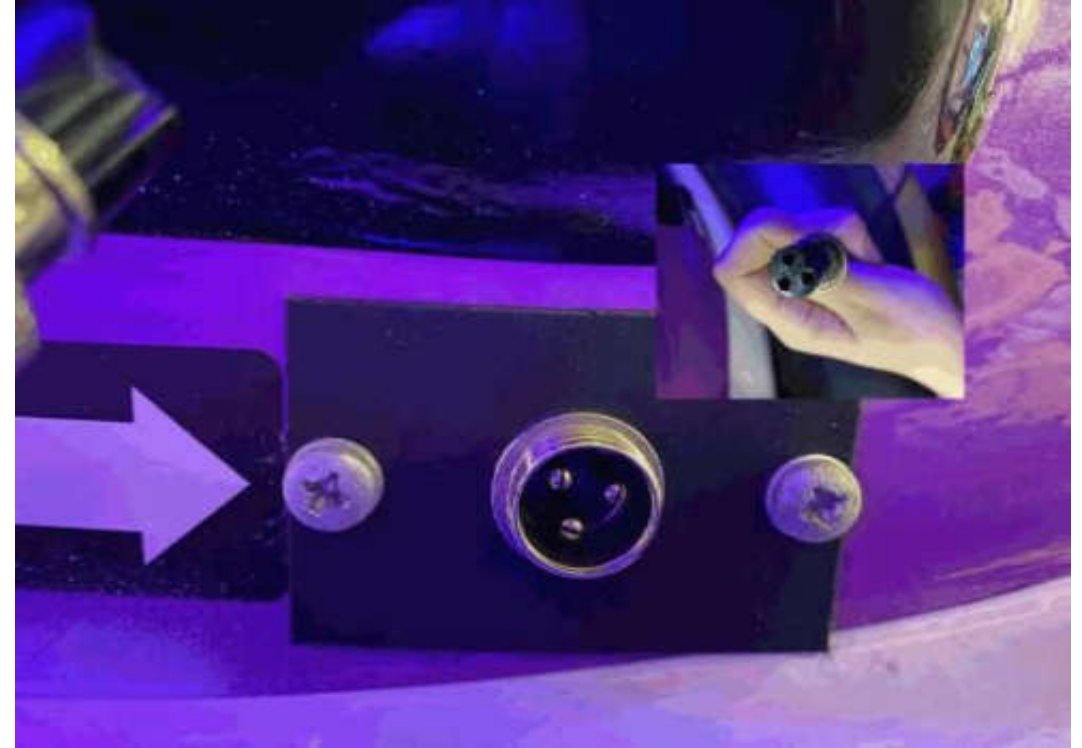


3. Add lubrication oil on motor wheel
every 1-2 months.

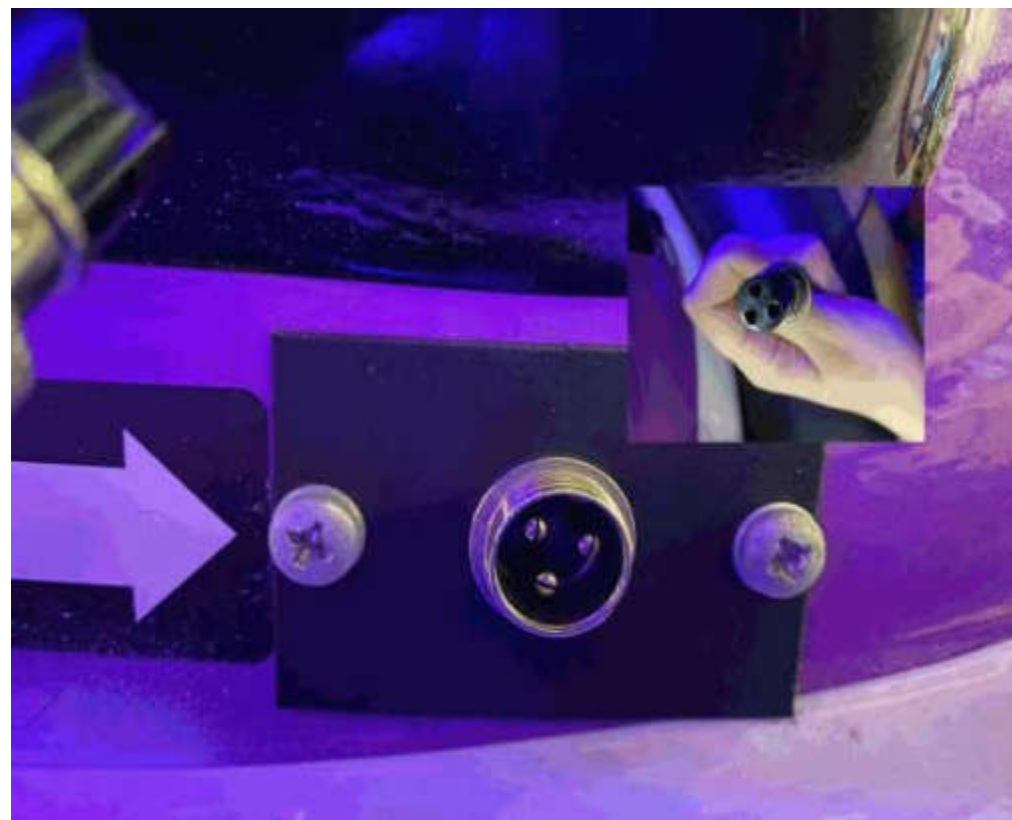
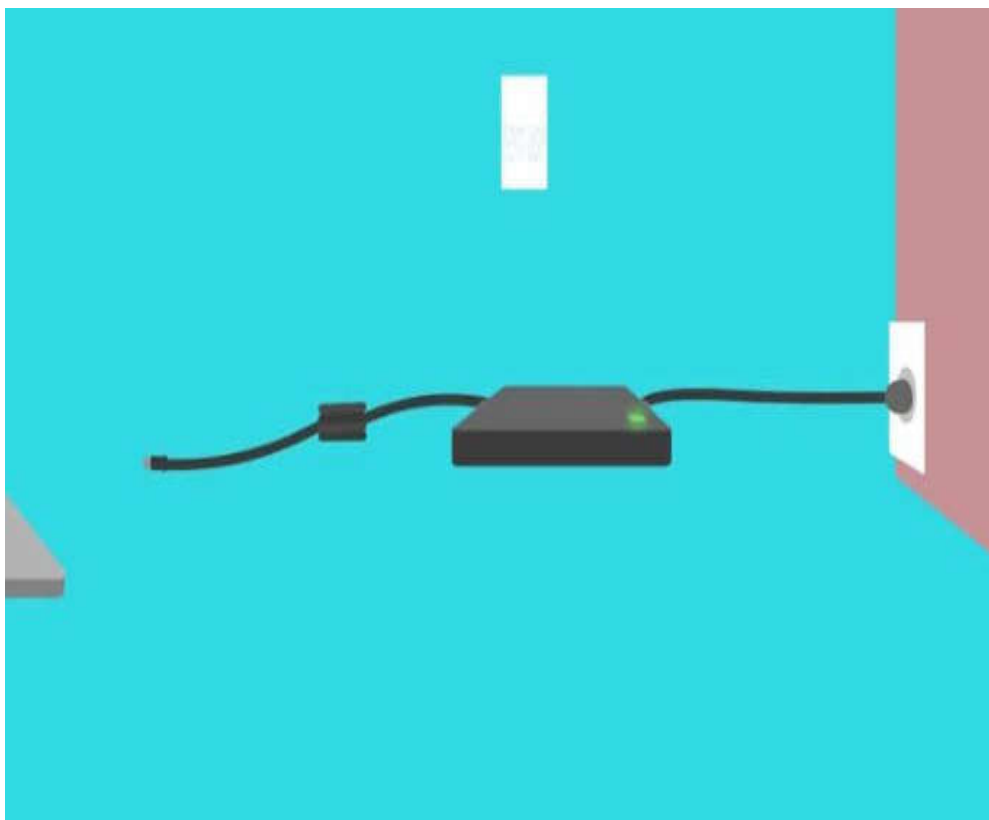
Battery



4. Must be charged for no less than 12 hours for the first three times.



5. The charging plug must be pulled out when fully charged.



6. Must connect AC(charging plug) first, then connect DC(plug the machine),instead, It will cause damage to the machine.

7. Suggested to be replaced after 2 years usage,in order to prevent accidents or potential danger.



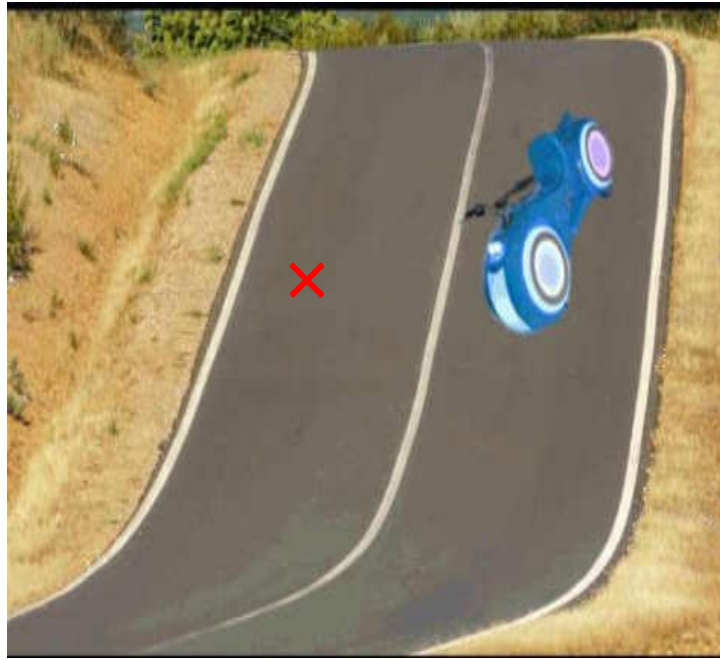
8. Must keep the rubber wheel and universal wheel clean and tidy when using, used away from human hair.



9. Must be equipped with rain cover to prevent the rain if outdoor storage.

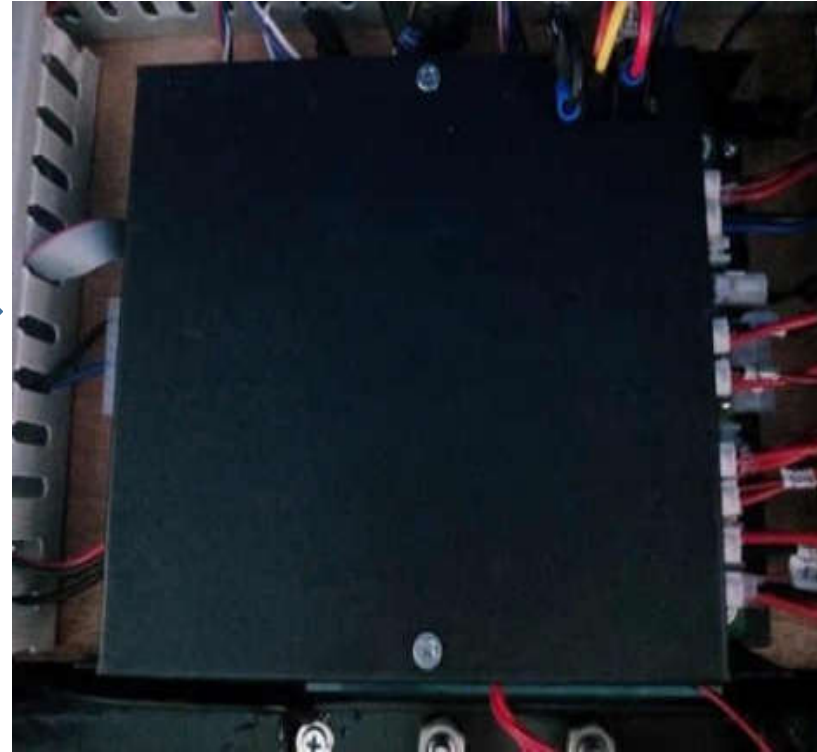


10. To prevent from breaking or leaking air of the air cushion, please do check if there is sharp items around fence and play area.



11. Keep Away From

- steep slope
- water
- grooved
- high-temperature



12.The mainboard box must be covered after maintenance is completed.

- It can prevent the dust and metal powder from sticking on it.
- Anti-oxidant.